

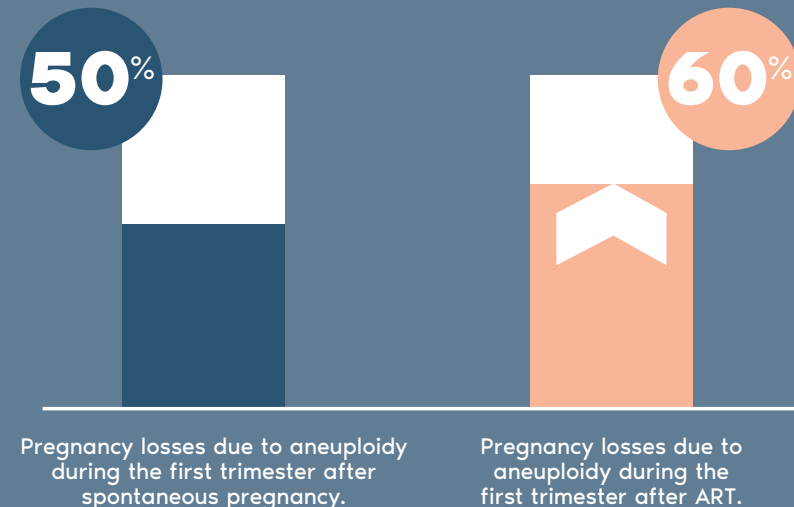
## niPOC is an advanced non-invasive test which uses a blood test to determine whether a pregnancy loss was caused by a chromosome abnormality.

Igenomix is the only laboratory in Spain which offers this test scientifically validated by its own case studies.

- The 24 chromosomes are analysed to pinpoint the reason for the pregnancy loss.
- A simple blood test provides the information a patient needs for suitable recommendations on future pregnancies.

**50% of pregnancy losses in the first trimester are caused by chromosomal anomalies.**

**This statistic is higher than 60%** among women who have received assisted reproductive treatment.



Martinez et al., 2010; Campos-Galindo, et al. J Assist Reprod Genet, 2015.

## Why niPOC?



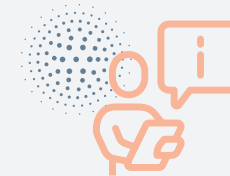
### NON-INVASIVE

No surgical procedure necessary to obtain miscarriage tissue. Results obtained with just a simple blood test.



### FAST

Results available within 7 working days, compared to 1 month with conventional tests.



### MORE INFORMATIVE

Results in more than 85% of cases, compared to 50% with conventional tests.

niPOC*	POC	CONVENTIONAL KARYOTYPING
<b>Non-invasive</b> Just needs a blood test	<b>Invasive</b> Generally requires curettage	<b>Invasive</b> Generally requires curettage
Informative results in >85%	Informative results in >85%	Informative results in approx. 50%
Approx. 15% non-informative results due to insufficient quantity or quality of DNA	Approx. 2% non-informative results due to insufficient quantity or quality of DNA	Approx. 30% non-informative results due to no culture growth
<b>No maternal cell contamination (MCC)</b>	Approx. 20% results with MCC, detectable with STRs	>20% MCC undetectable
Does not require culture	Does not require culture	Requires culture
<b>TAT 3-7 working days</b>	TAT 12 working days	TAT 3-4 weeks

\*Own validation. Internal Igenomix data.

## Why Igenomix?



### Unbeatable experience

More than 10 years' experience performing genetic analysis on miscarriage tissue

More than 13,000 samples analysed



### Own validation

Test performance metrics based on our own experience



### Dual Algorithm

10% better diagnostic performance

Less false negatives

Offers better reproductive advice